



**MEMORANDUM**

To: Vienna

From: Crist (Reviewer); Ohio EPA Legal Office.

Date: 5/21/2015

These files were reviewed to determine whether records contained herein are confidential or otherwise exempt from the disclosure obligations of Ohio Revised Code (ORC) 149.43.

**All files are public**

No records were removed based on this review.

**Some files are not public**

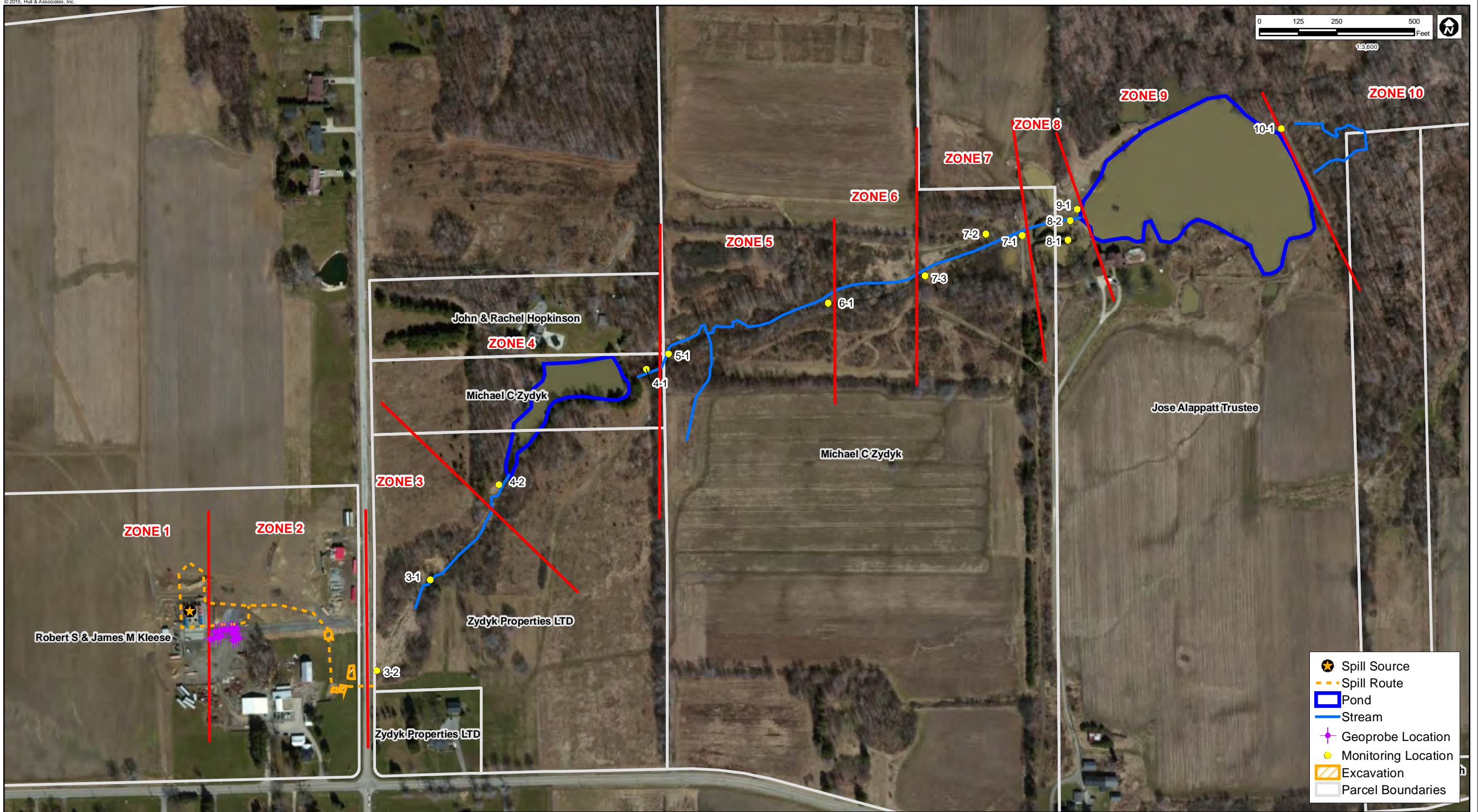
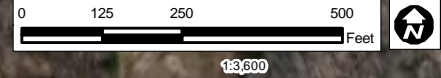
Records were removed or redacted for the reasons given below:

- Attorney- Client Privilege**, State ex rel. Leslie v. Ohio Hous. Fin. Agency, 105 Ohio St.3d 261, 265 (2005).
- Attorney Work Product**, Squire, Sanders & Dempsey, L.L.P. v. Givaudan Flavors Corp., 127 Ohio St.3d 161 (2010).
- Confidential Law Enforcement Investigatory Records**, ORC 149.43(A)(1)(h).
- Social Security Numbers**, State ex rel. Office of Montgomery County Pub. Defender v. Siroki, 108 Ohio St.3d 207 (2006).
- Release Otherwise Prohibited by Law**, (i.e. trade secret, infrastructure and security records, etc.), ORC 149.43(A)(1)(v).
- Other Specified Reason:** \_\_\_\_\_

**All files are confidential**

Should you have any questions regarding this issue, please contact Ohio EPA's Office of Legal Services.

(This memorandum is to remain visibly attached to this file.)



- Spill Source
- Spill Route
- Pond
- Stream
- Geoprobe Location
- Monitoring Location
- Excavation
- Parcel Boundaries

**Notes:**  
The aerial photo was acquired through the ESRI Imagery web service. Aerial photography dated 2012.



6397 Emerald Pkwy  
Suite 200  
Dublin, Ohio 43016  
Phone: (614) 793-8777  
Fax: (614) 793-9070  
www.hullinc.com

**DISCLAIMER**  
Hull & Associates, Inc. (Hull) has furnished this map to the company identified in the title block (Client) for its sole and exclusive use as a preliminary planning and screening tool and field verification is necessary to confirm these data. This map is reproduced from geospatial information compiled from third-party sources which may change over time. Areas depicted by the map are approximate and may not be accurate to mapping, surveying or engineering standards. Hull makes no representation or guarantee as to the content, accuracy, timeliness or completeness of any information or spatial location depicted on this map. This map is provided without warranty of any kind, including but not limited to, the implied warranties of merchantability or fitness for a particular purpose. In no event will Hull, its owners, officers, employees or agents, be liable for damages of any kind arising out of the use of this map by Client or any other party.

April 2015

KDA Disposal Inc.

Figure

GPS Data

XX

Vienna, Trumbull County, Ohio